

Fighting for the U.S. Cattle Producer!



R-CALF

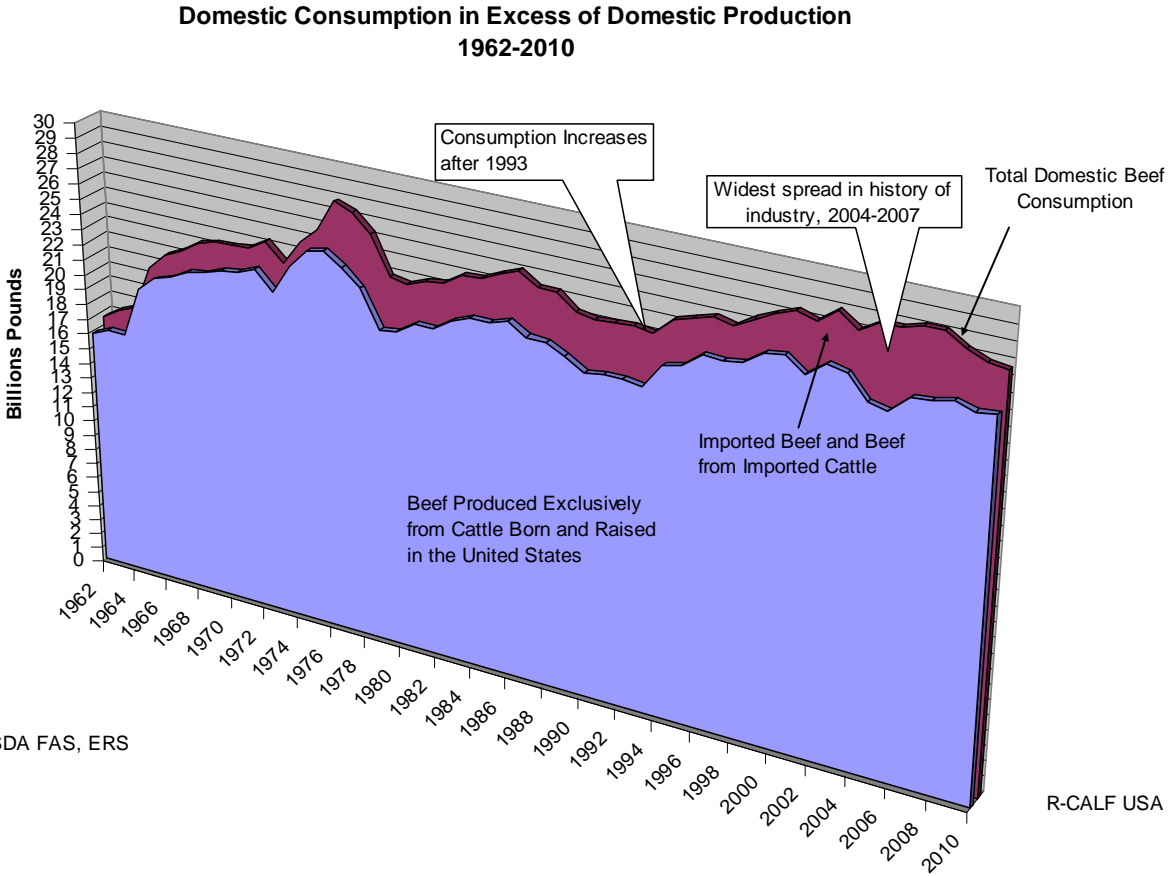
USA

**U.S. Trade Balance in
Live Cattle, Beef, Beef Variety Meats, and Processed Beef**

Decades of Neglect

Prepared by R-CALF USA
Using Data Compiled by
USDA Foreign Agricultural Service and Economic Research Service
February 22, 2011

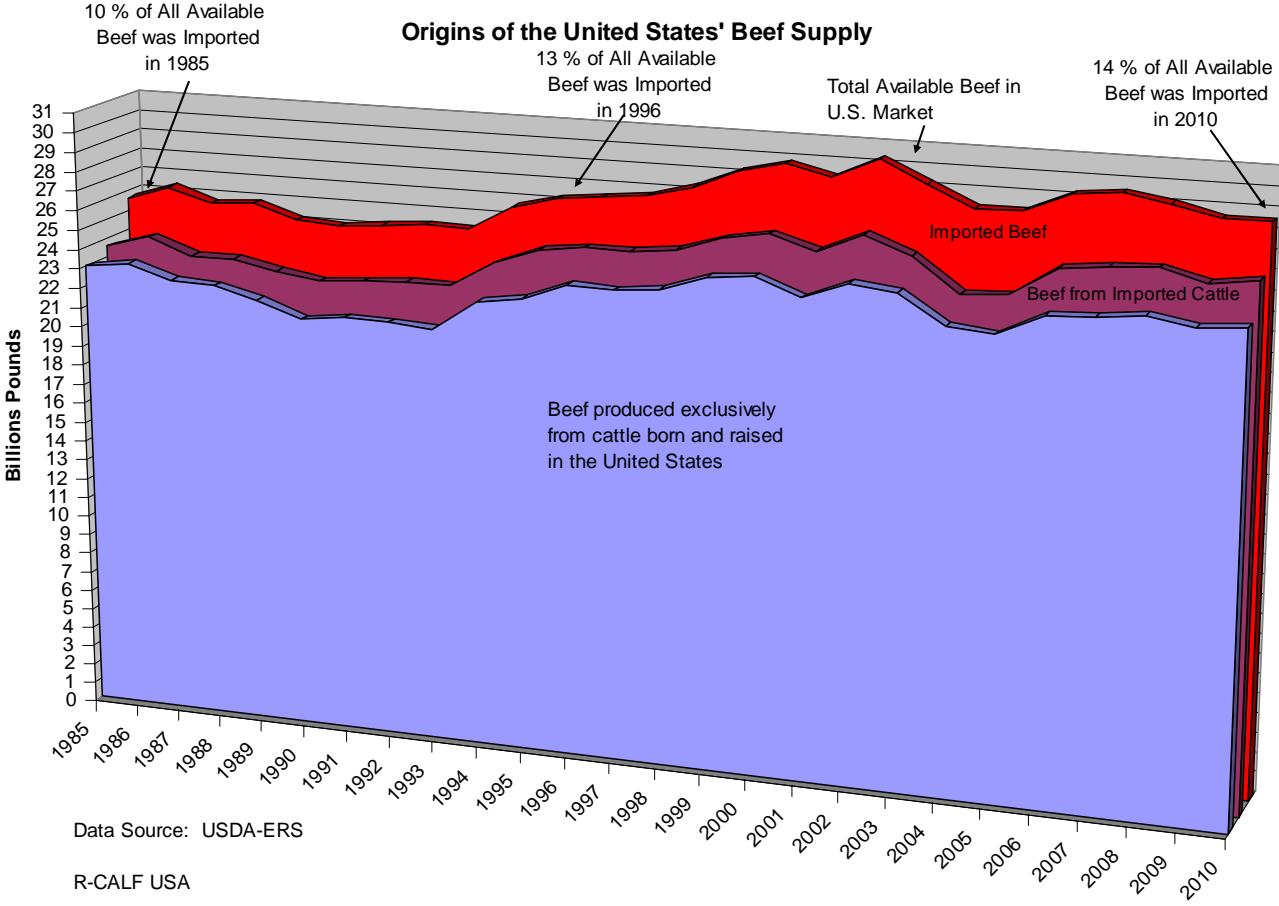
Historic Under-Production of Domestic Beef in Recent Years



Conversion of imported cattle to beef accomplished by multiplying the number of imported cattle by each year's average slaughter carcass weight.

R-CALF USA

Cattle and Beef Imports Suppress Domestic Beef Production



Conversion of imported cattle to beef accomplished by multiplying the number of imported cattle by each year's average slaughter carcass weight.

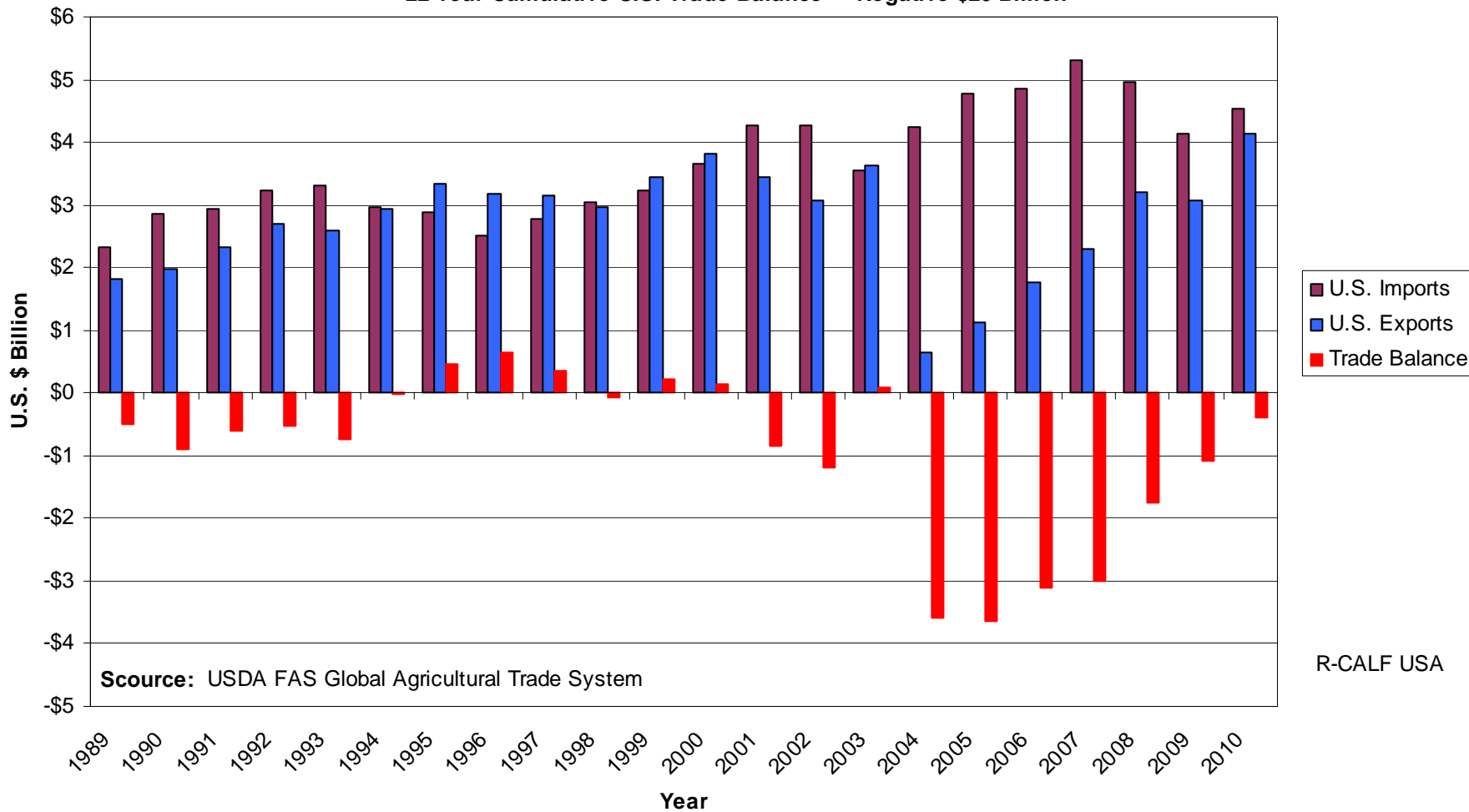
The Following Charts Include All Trade Data for Live Cattle, Beef, Beef Variety Meats, and Processed Beef

The U.S. International Trade Commission (ITC) has determined that the following major product categories account for trade in beef; and categories for live cattle have been added to the ITC's major beef categories

- HS 010210: Bovine Live, Pur
- HS 010290: Bovine Live
- HS 020110: Bovine Carcass, Fr/Ch
- HS 020120: Bovine Bone in, Fr/Ch
- HS 020130: Bovine Boneless, Fr/Ch
- HS 020210: Bovine Carcass, Froz
- HS 020220: Bovine Bone in, Froz
- HS 020230: Bovine Boneless, Froz
- HS 020610: Bovine Offal, Fr/Ch
- HS 020621: Bovine Tongue, Fr/Ch
- HS 020622: Bovine Livers, Fr/Ch
- HS 020629: Bovine Offal, Froz
- HS 021020: Bovine Meat, Salted
- HS 160250: Bovine Meat, Prepared

U.S. Global Trade in Live Cattle, Beef, Beef Variety Meats and Processed Beef

22-Year Cumulative U.S. Trade Balance = Negative \$20 Billion



Source: USDA FAS Global Agricultural Trade System

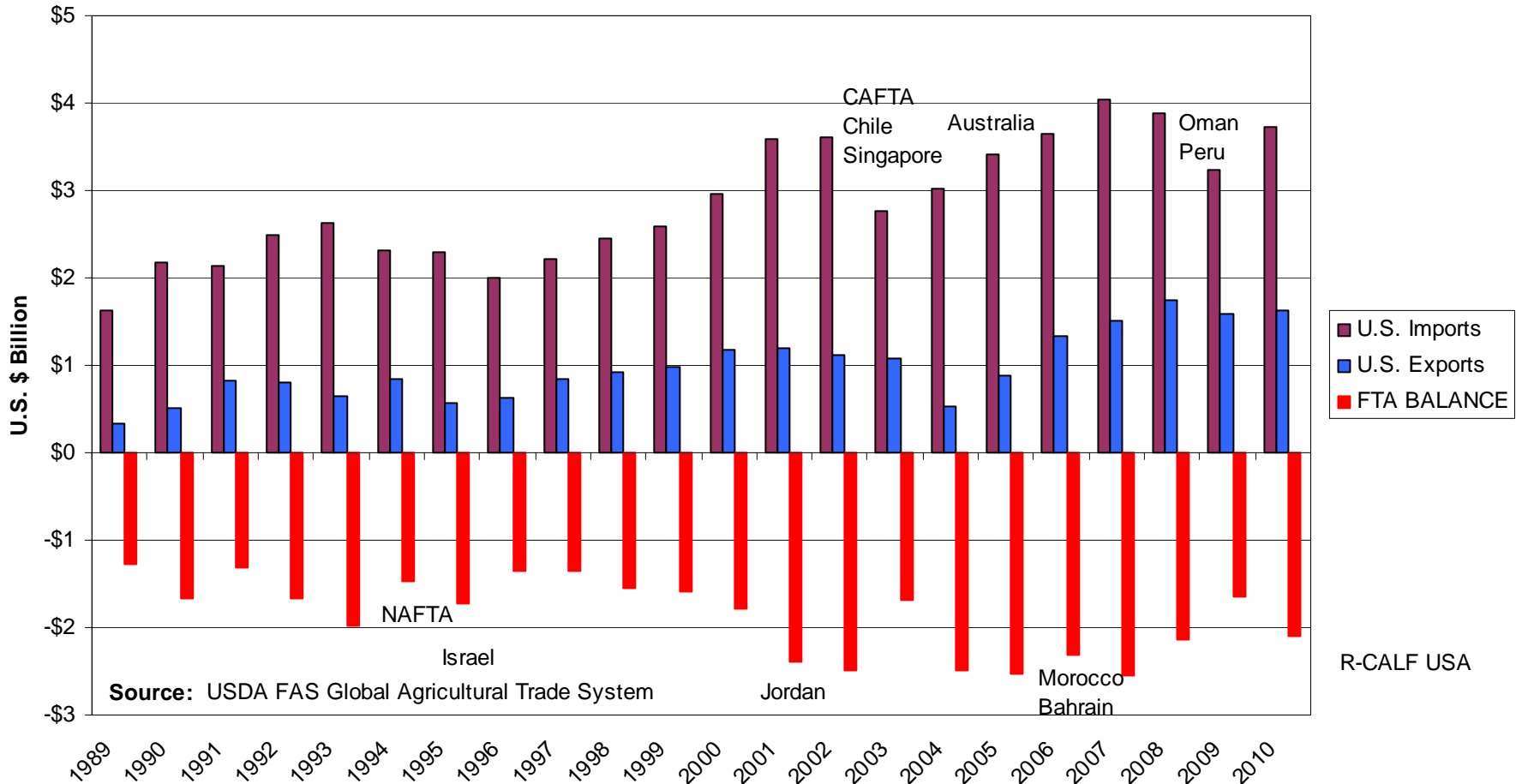
R-CALF USA

17 Countries Participate in Free Trade Agreements with the U.S.

- Australia
- Bahrain
- Canada
- Chile
- Costa Rica
- Dominican Republic
- El Salvador
- Guatemala
- Honduras
- Israel
- Jordan
- Mexico
- Morocco
- Nicaragua
- Oman
- Peru
- Singapore

U.S. Trade in Live Cattle, Beef, Beef Variety Meats, and Processed Beef With 17 FTA Countries

22-Year Cumulative U.S. Trade Balance = Negative \$41 Billion

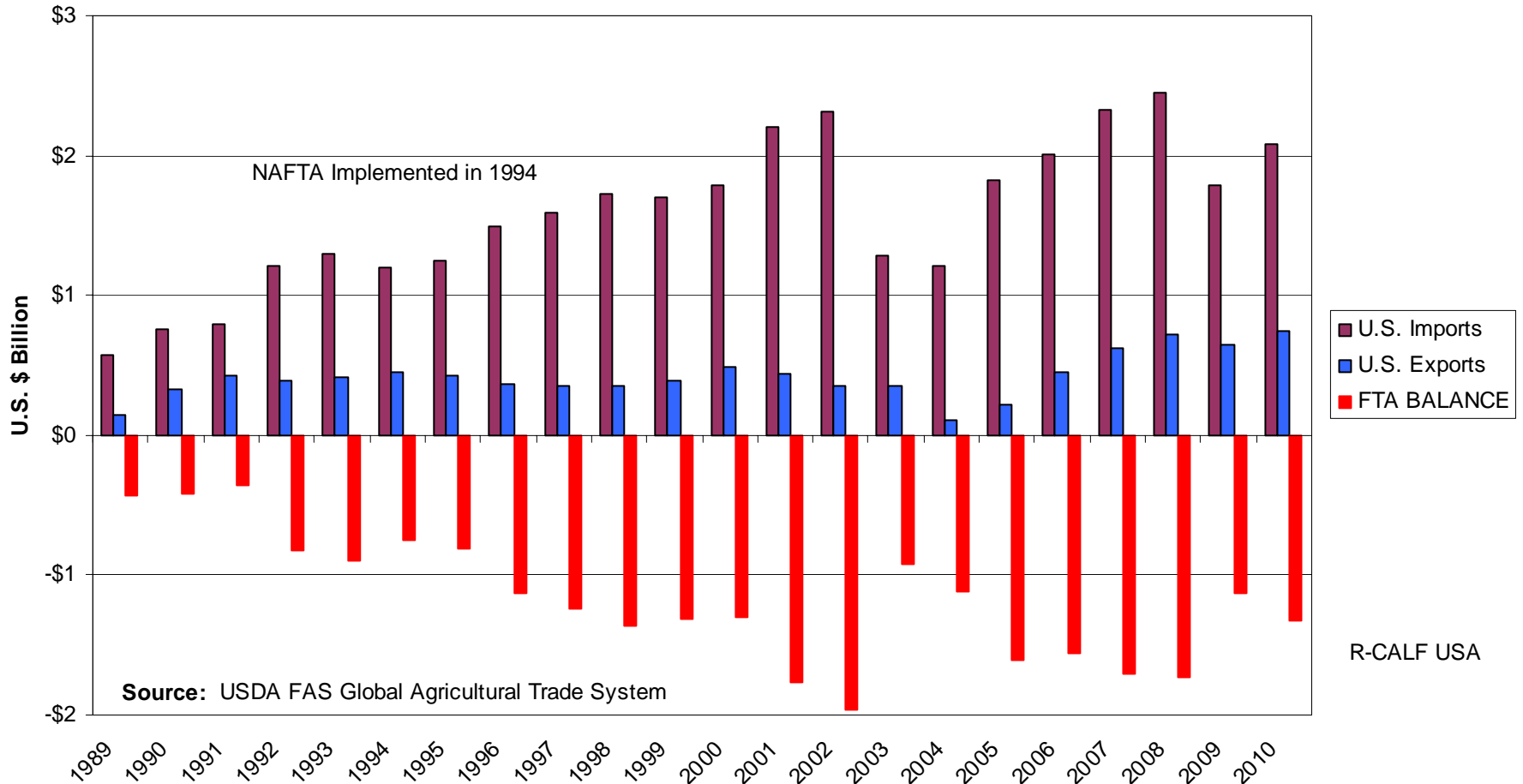


Source: USDA FAS Global Agricultural Trade System

R-CALF USA

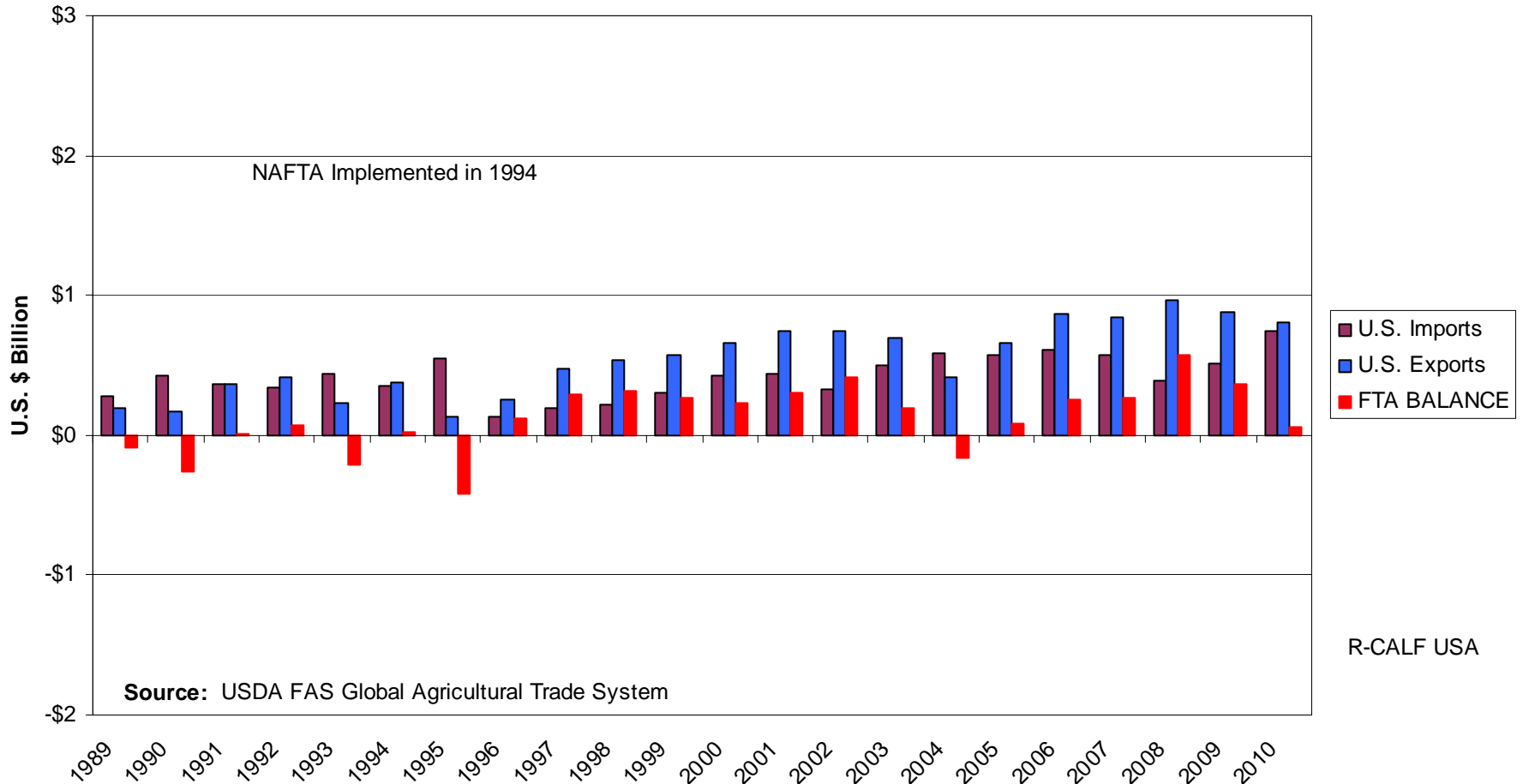
U.S. Trade Balance in Live Cattle, Beef, Beef Variety Meats, and Processed Beef with Canada

22-Year Cumulative U.S. Trade Balance = Negative \$26 Billion



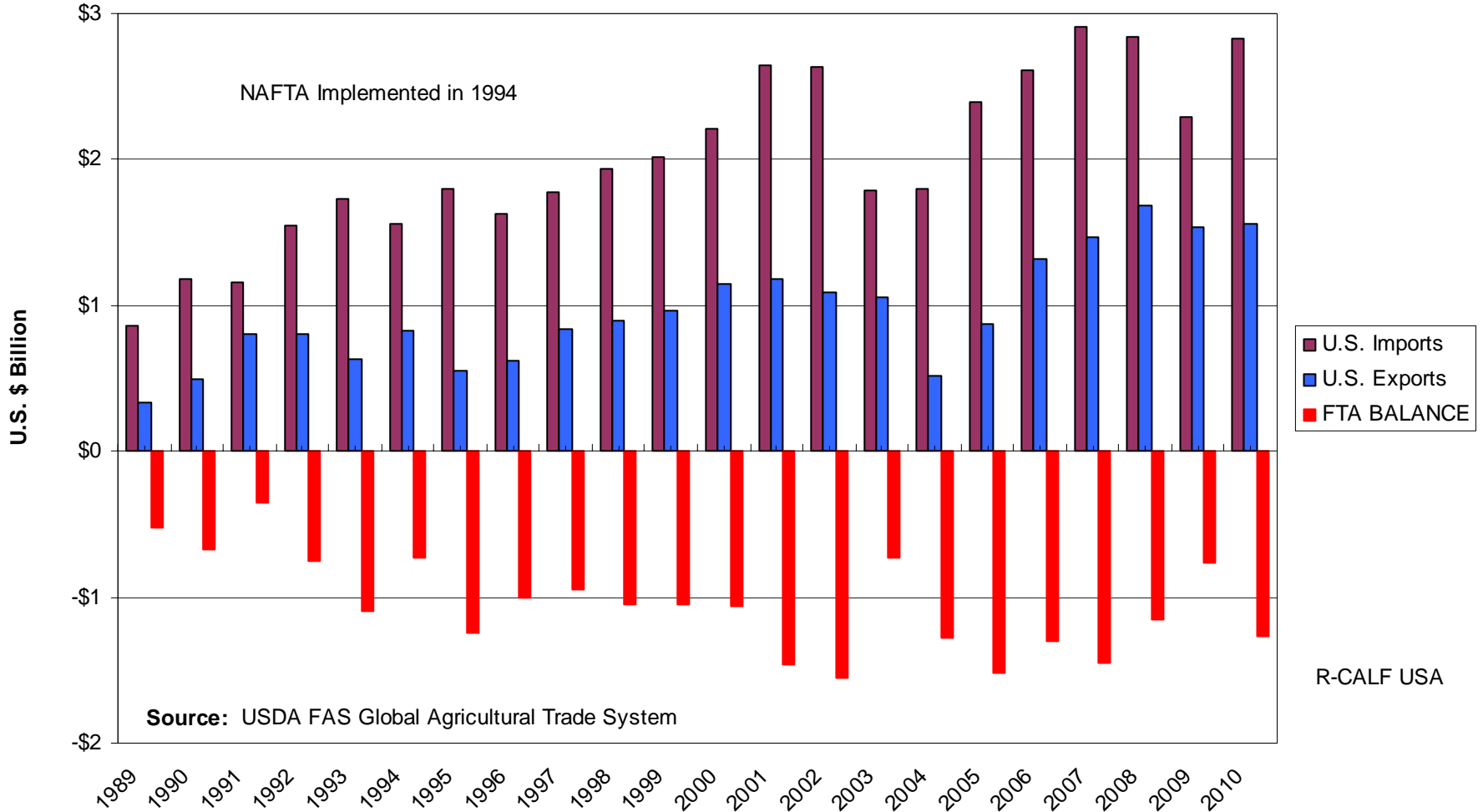
U.S. Trade Balance in Live Cattle, Beef, Beef Variety Meats, and Processed Beef with Mexico

22-Year Cumulative U.S. Trade Balance = Positive \$3 Billion



U.S. Trade Balance in Live Cattle, Beef, Beef Variety Meats, and Processed Beef with Canada and Mexico (NAFTA)

22-Year Cumulative Trade Balance = Negative \$ 23 Billion

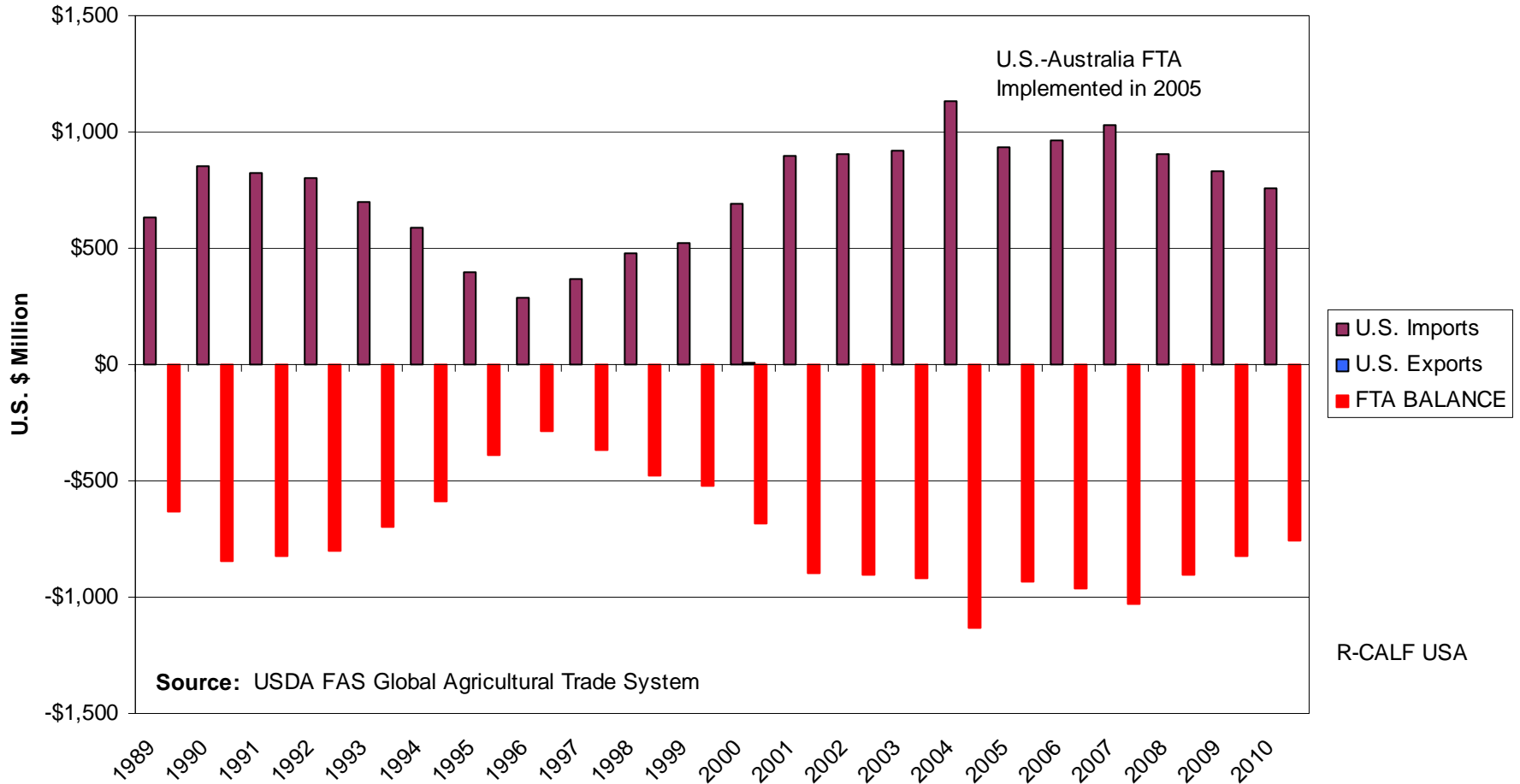


Source: USDA FAS Global Agricultural Trade System

R-CALF USA

U.S. Trade Balance in Live Cattle, Beef, Beef Variety Meats, and Processed Beef with Australia

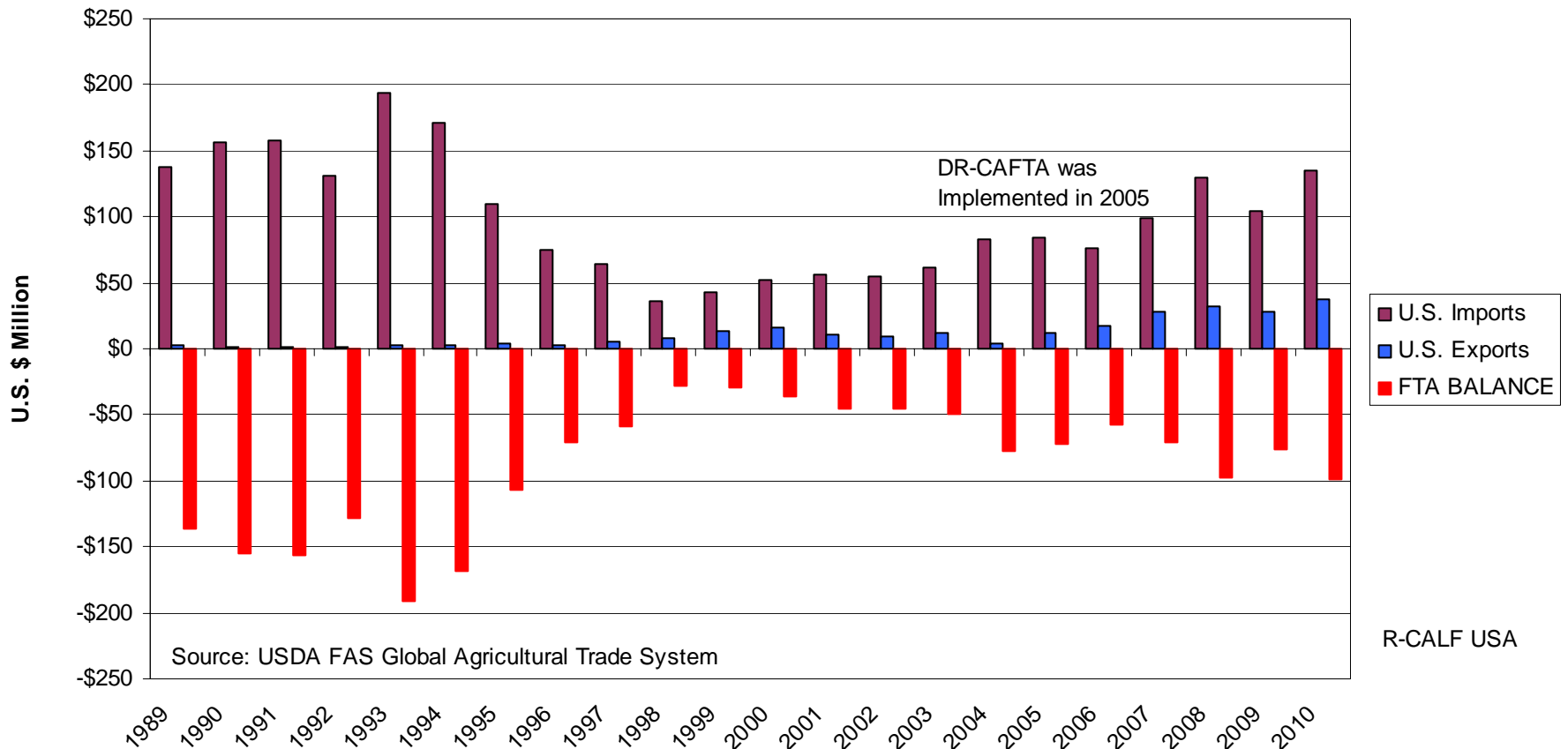
22-Year Cumulative U.S. Trade Balance = Negative \$16 Billion



U.S. Trade Balance In Live Cattle, Beef, Beef Variety Meats, and Processed Beef With Six CAFTA Countries

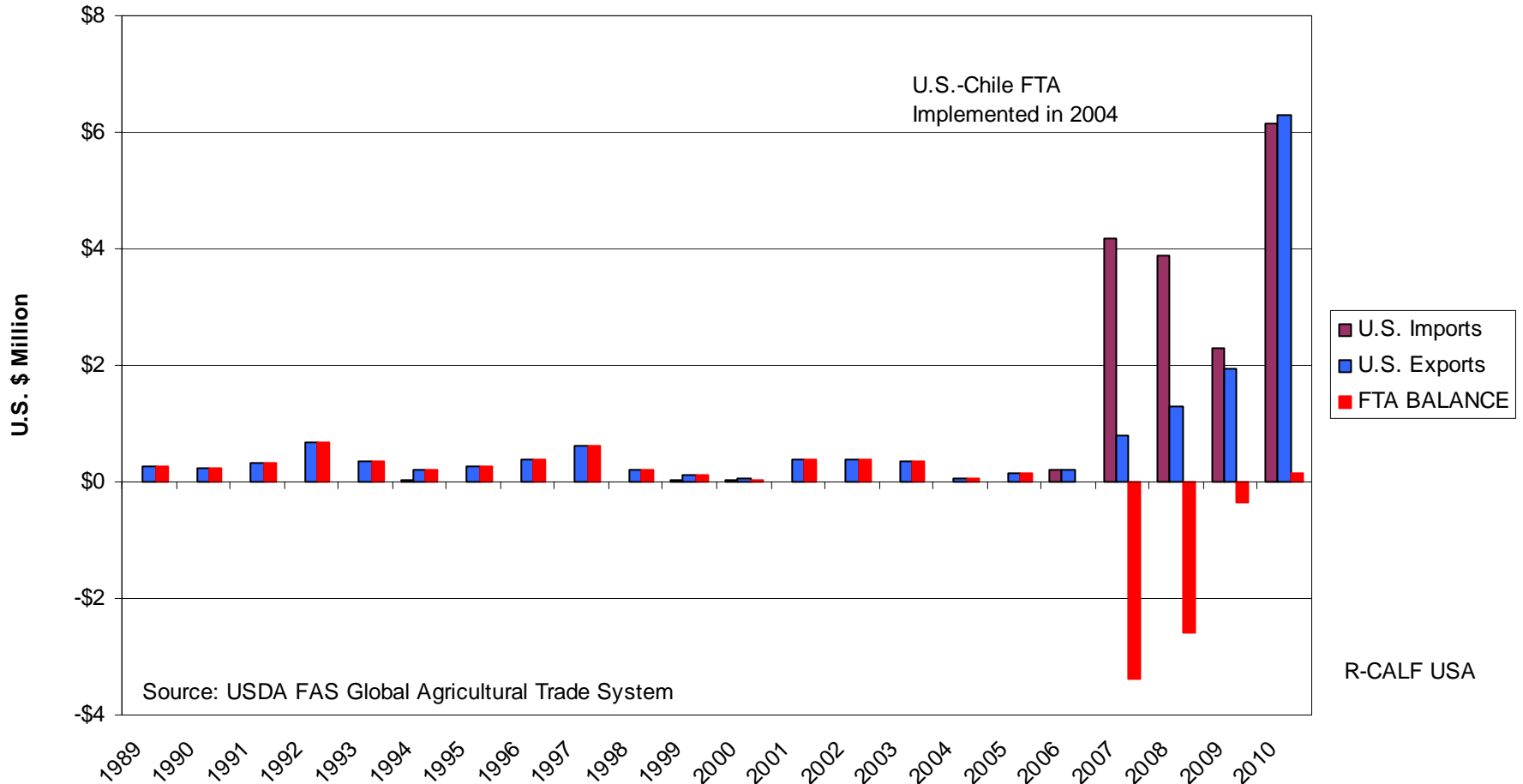
22-Year Cumulative U.S. Trade Balance = Negative \$2 Billion

(Includes Costa Rica, El Salvador, Guatemala, Honduras, Nicaragua, and Dominican Republic)



U.S. Trade Balance In Live Cattle, Beef, Beef Variety Meats, and Processed Beef With Chile

22-Year Cumulative U.S. Trade Balance = Negative \$1 Million



U.S. Trade Balance In Live Cattle, Beef, Beef Variety Meats, and Processed Beef With Uruguay

22-Year Cumulative U.S. Trade Balance = Negative \$2 Billion

