

Fighting for the U.S. Cattle Producer!



R-CALF

USA

**U.S. Trade Balance
in the Trade of
Cattle and Calves, Beef and Veal**

A Disaster In the Happening

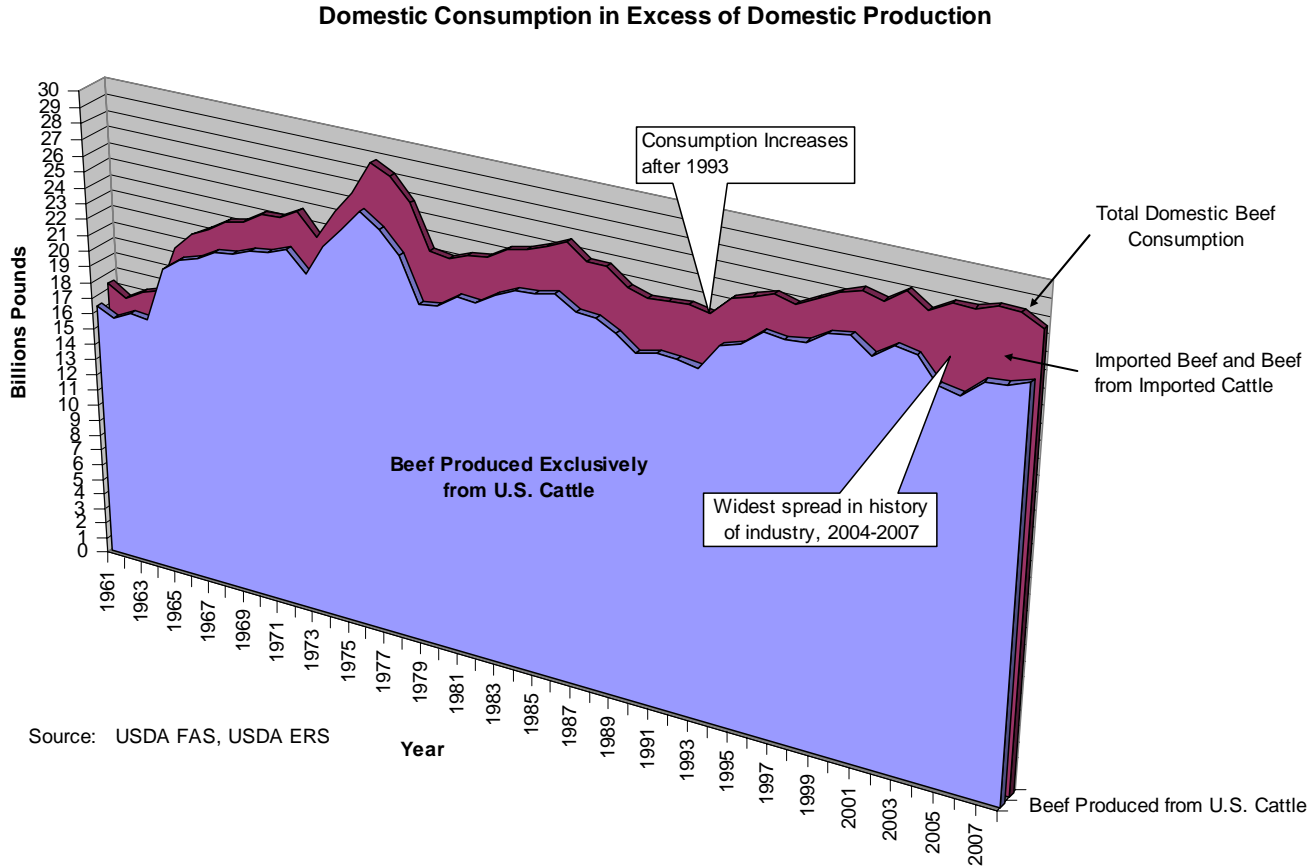
Prepared by R-CALF USA

Using Data Compiled by

USDA Foreign Agricultural Trade of the United States (FATUS)

December 17, 2009

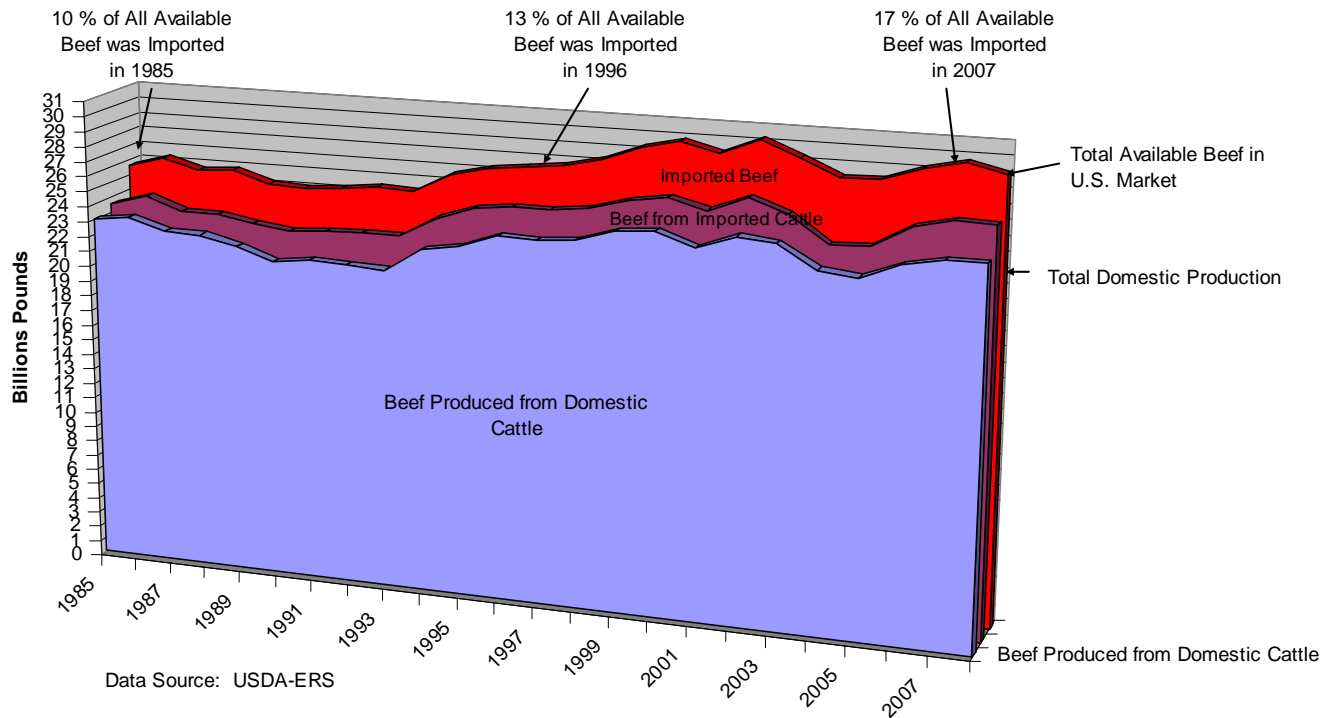
Historic Under-Production of Domestic Beef in Recent Years



Conversion of imported cattle to beef accomplished by multiplying the number of imported cattle by each year's average slaughter carcass weight.

Cattle and Beef Imports Capturing Growth in Domestic Beef Supply

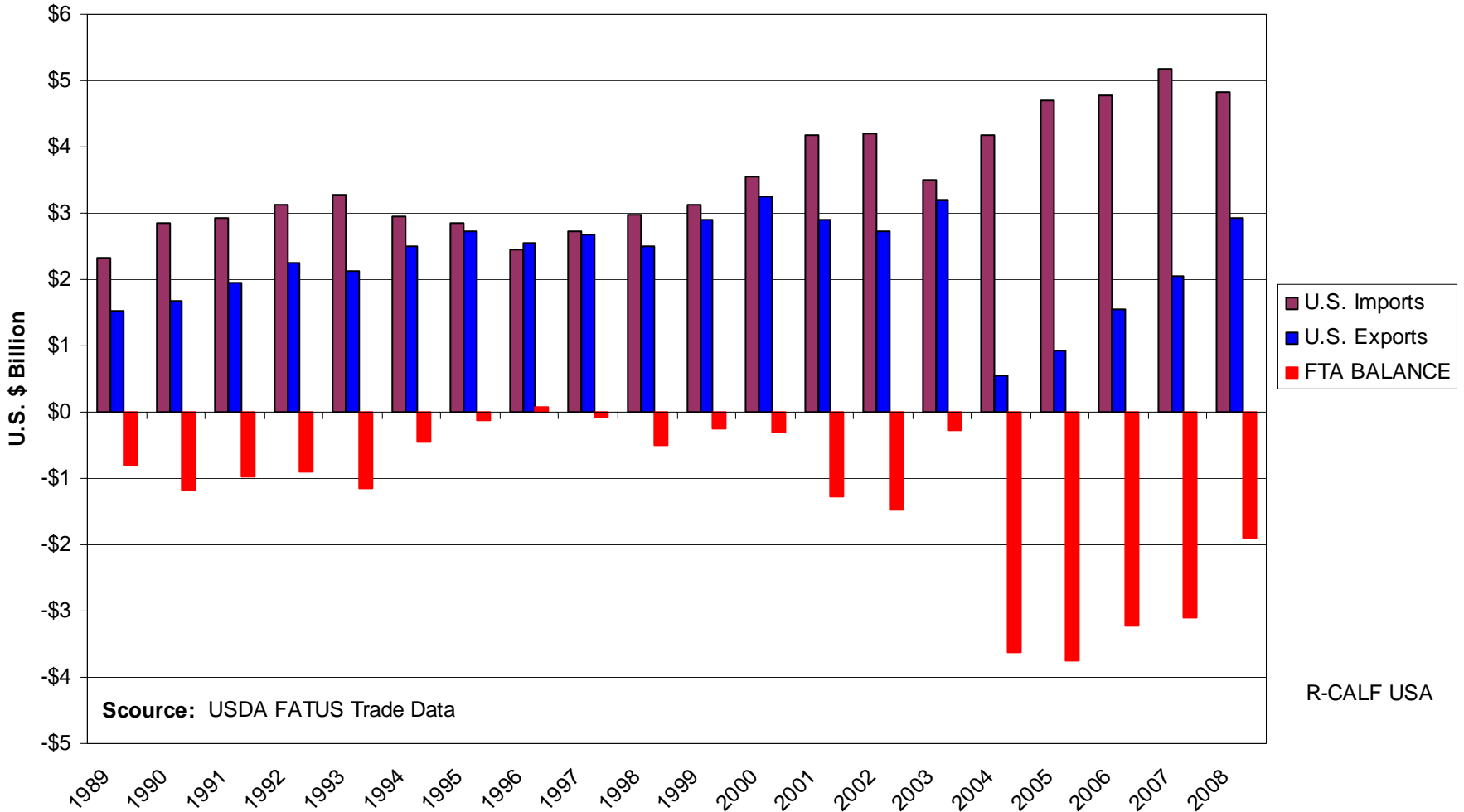
Origins of United States Beef Supply



Conversion of imported cattle to beef accomplished by multiplying the number of imported cattle by each year's average slaughter carcass weight.

U.S. Global Trade in Cattle and Beef

20-Year Cumulative U.S. Trade Balance = Negative \$25.2 Billion



Source: USDA FATUS Trade Data

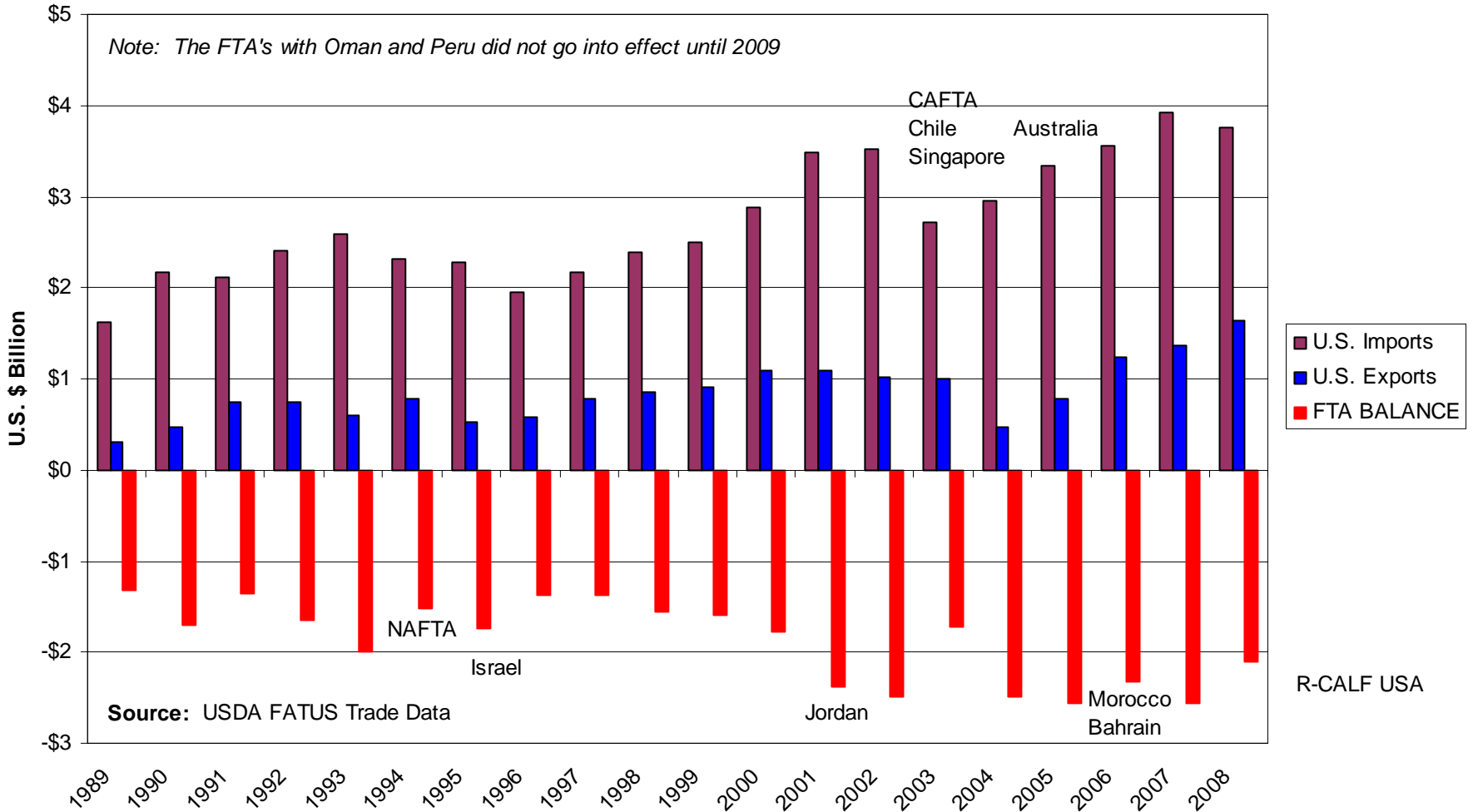
R-CALF USA

17 Countries Participate in Free Trade Agreements with the U.S.

- Australia
- Bahrain
- Canada
- Chile
- Costa Rica
- Dominican Republic
- El Salvador
- Guatemala
- Honduras
- Israel
- Jordan
- Mexico
- Morocco
- Nicaragua
- Oman
- Peru
- Singapore

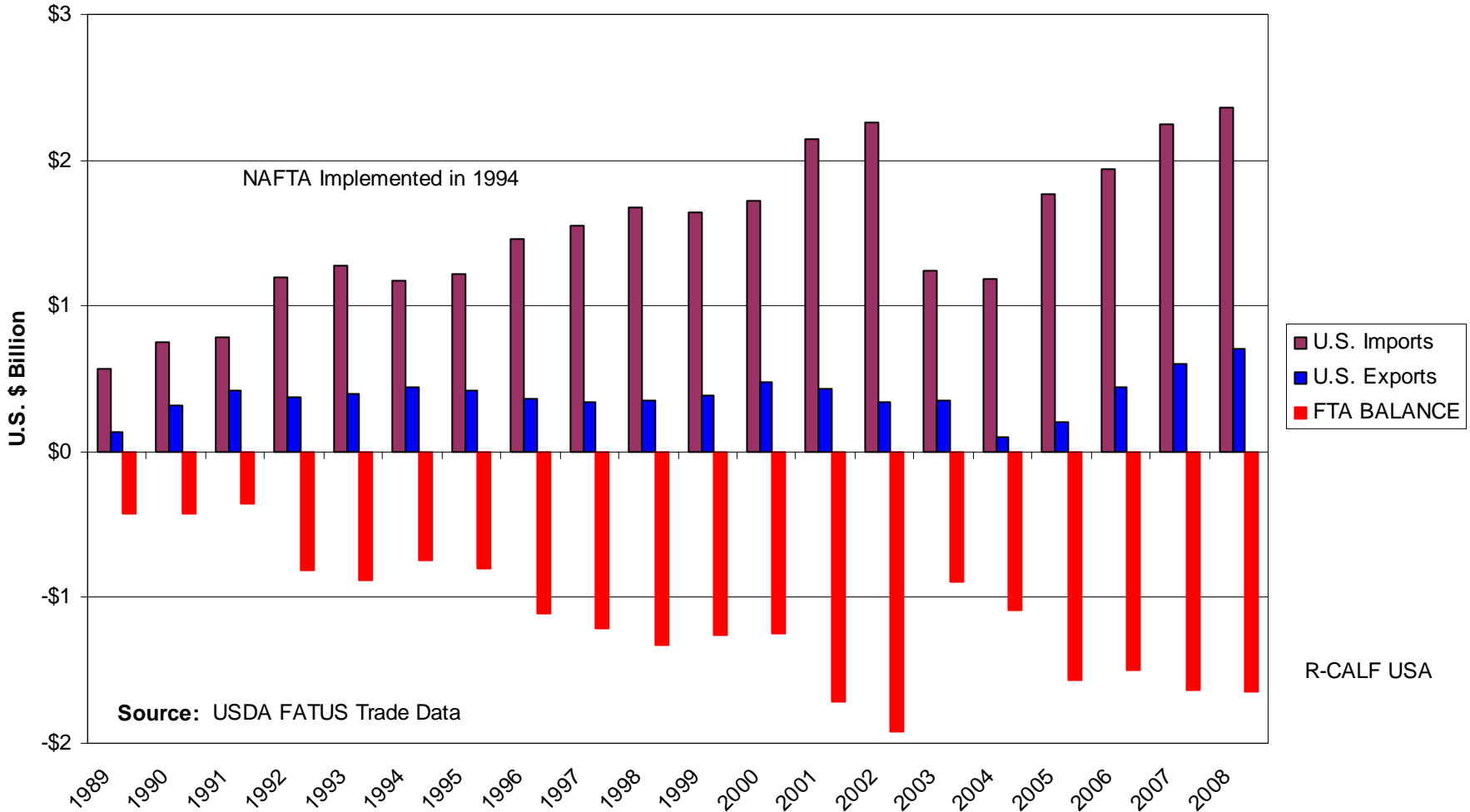
U.S. Trade in Cattle and Beef With 17 FTA Countries

20-Year Cumulative U.S. Trade Balance = Negative \$37.6 Billion



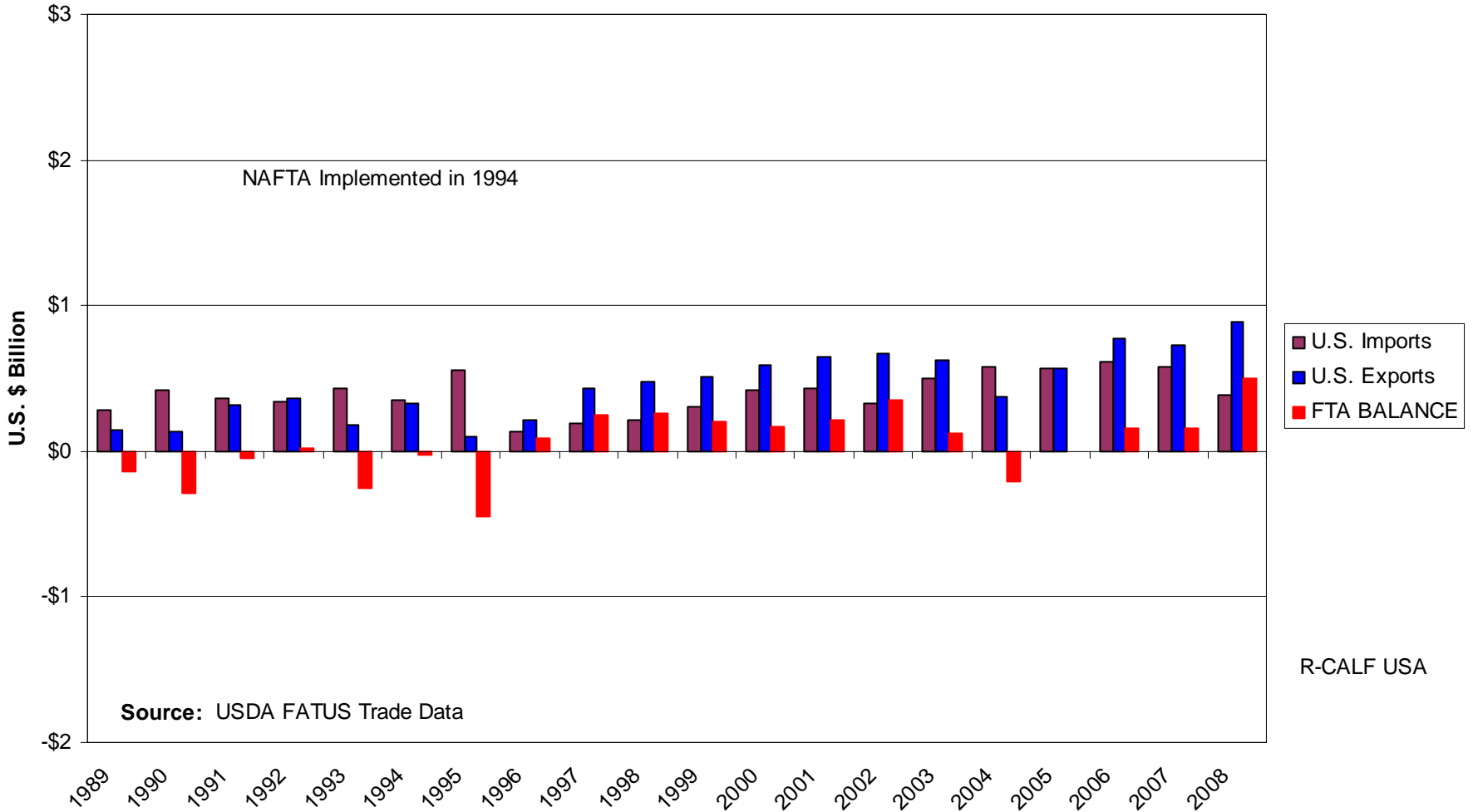
U.S. Trade Balance in Cattle and Beef with Canada

20-Year Cumulative U.S. Trade Balance = Negative \$22.6 Billion



U.S. Trade Balance in Cattle and Beef with Mexico

20-Year Cumulative U.S. Trade Balance = Positive \$1 Billion

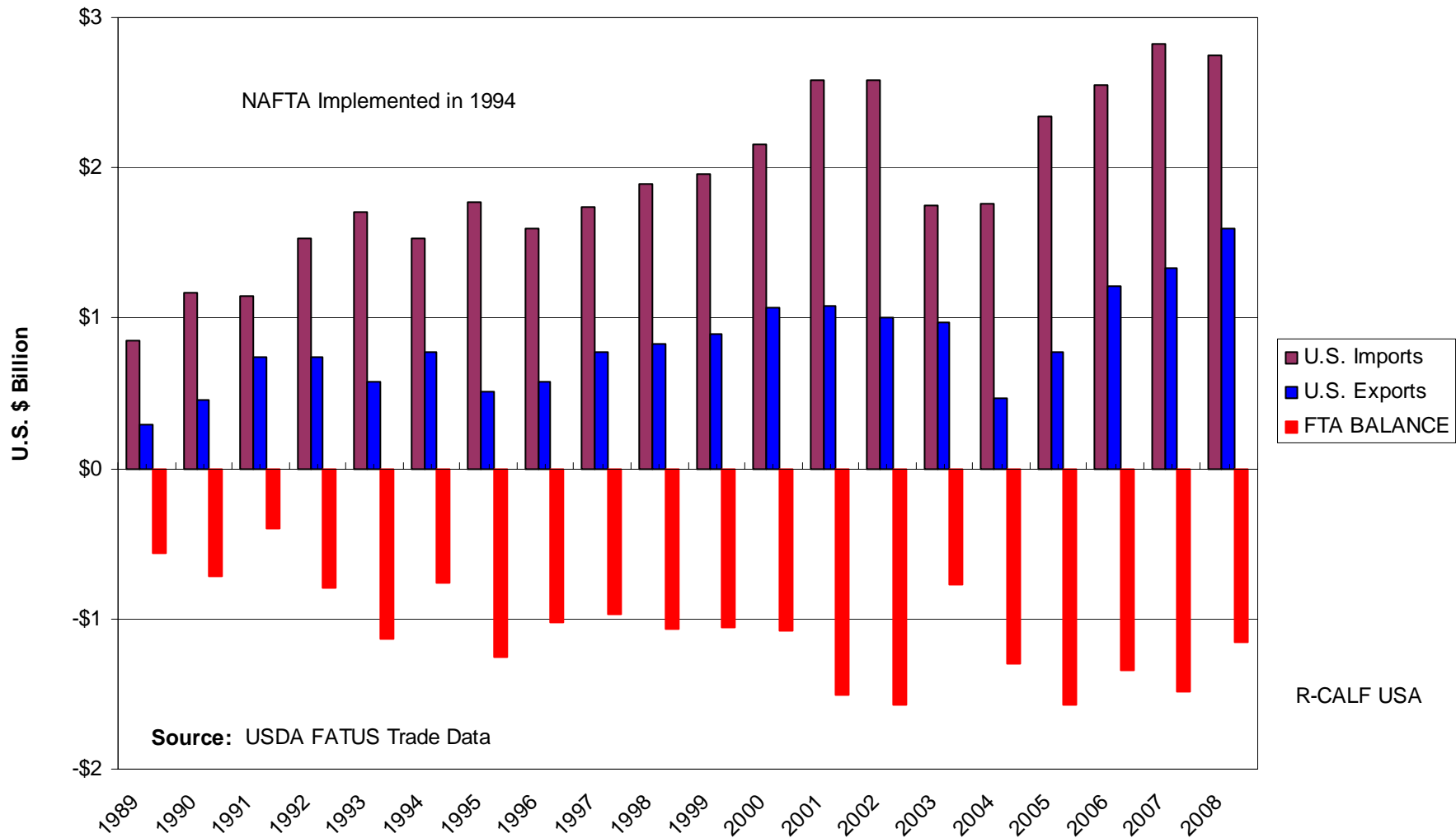


Source: USDA FATUS Trade Data

R-CALF USA

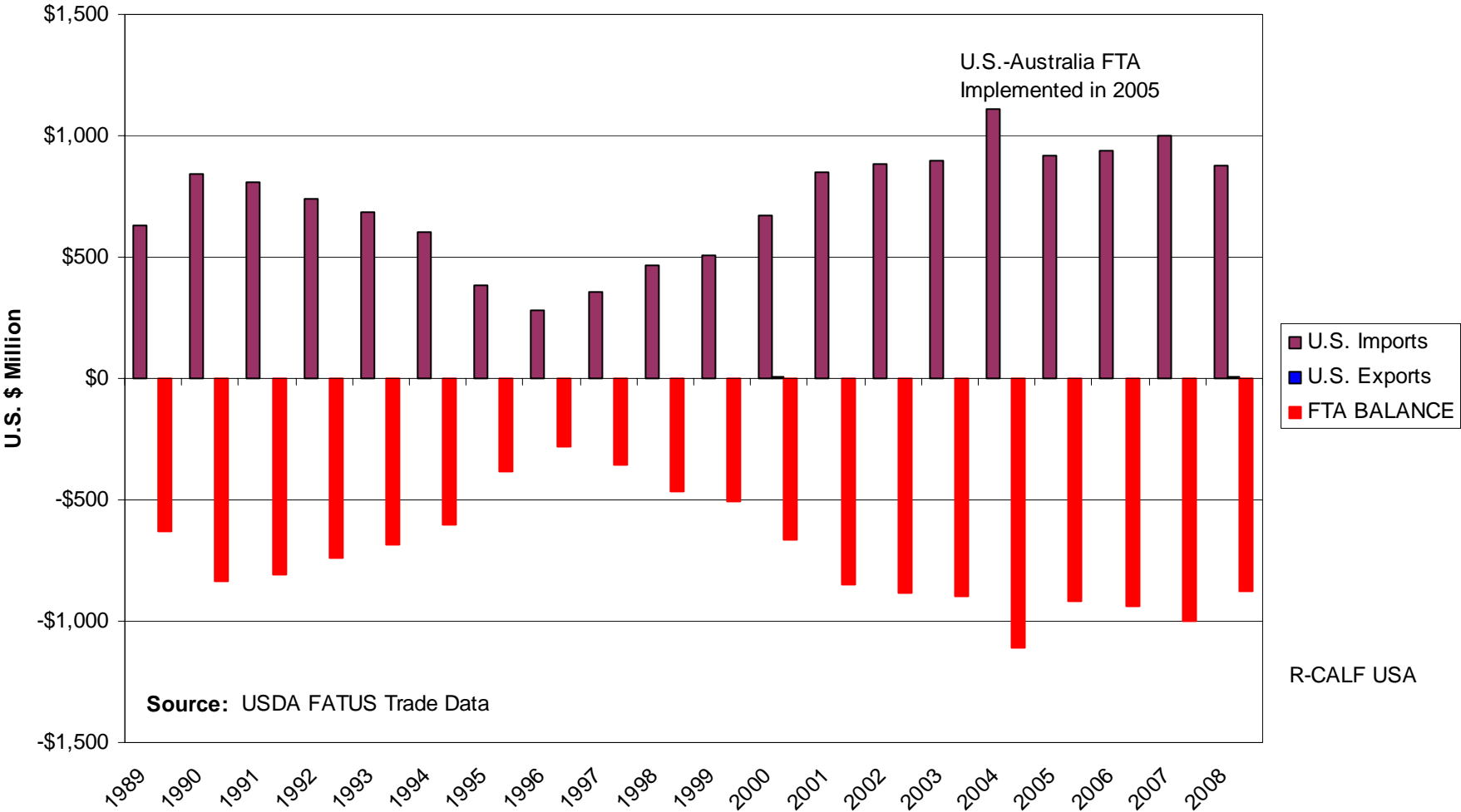
U.S. Trade Balance in Cattle and Beef with Canada and Mexico (NAFTA)

20-Year Cumulative Trade Balance = Negative \$21.5 Billion



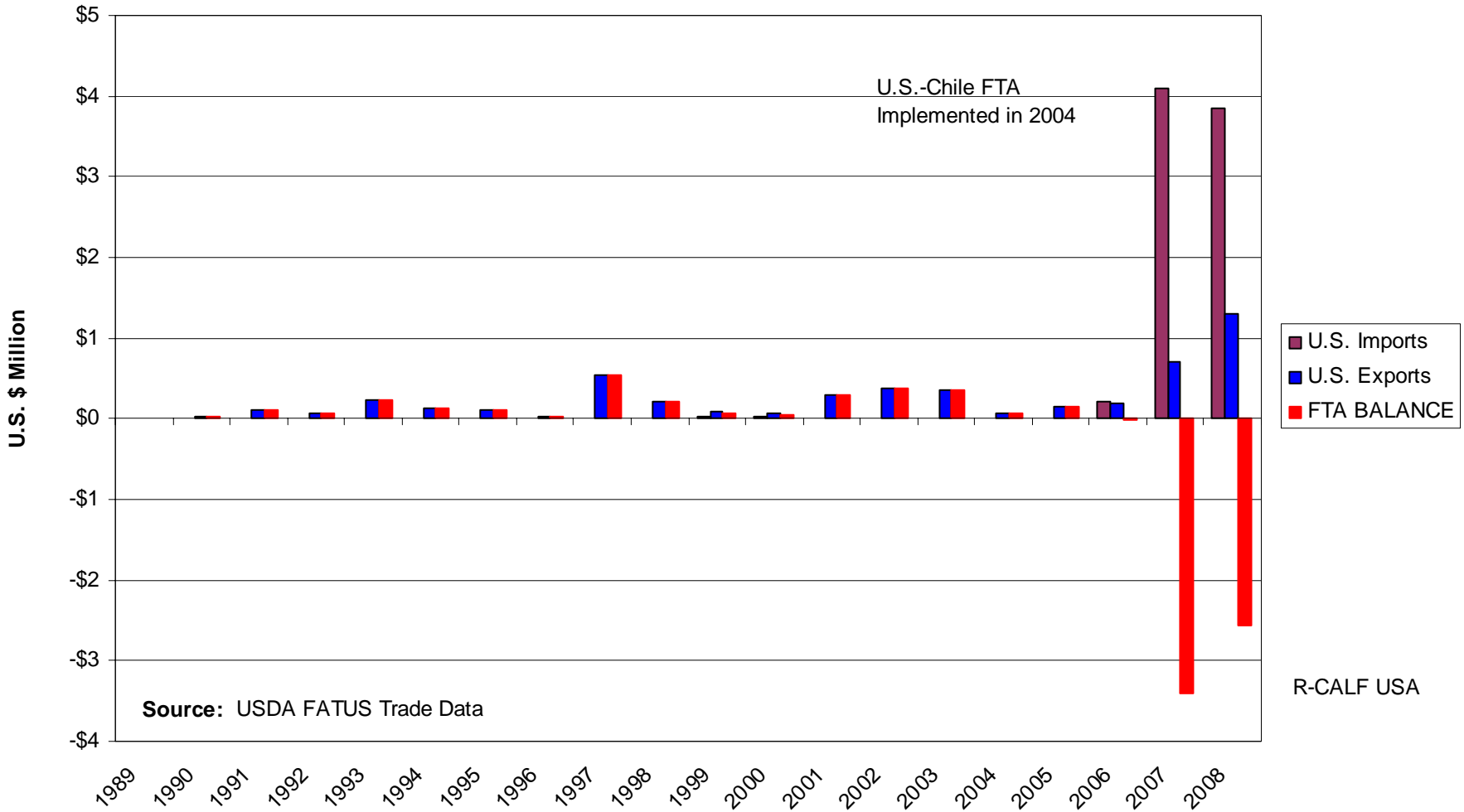
U.S. Trade Balance in Cattle and Beef with Australia

20-Year Cumulative U.S. Trade Balance = Negative \$14.4 Billion



U.S. Trade Balance In Cattle and Beef With Chile

20-Year Cumulative U.S. Trade Balance = Negative \$3.2 Million



U.S. Trade Balance In Cattle and Beef With Uruguay

20-Year Cumulative U.S. Trade Balance = Negative \$1.8 Billion

